

Martz, E. O., Lee, T., Lakes, R. S., Goel, V. K. and Park, J. B.
"Re-entrant transformation methods in closed cell foams",
***Cellular Polymers*, 15, 229-249, (1996)**

Figures 7 to 13

Figure 7 Scanning electron micrograph of original PMI 51 WF foam (Magnification 128X). Length of scale mark is 3 mm

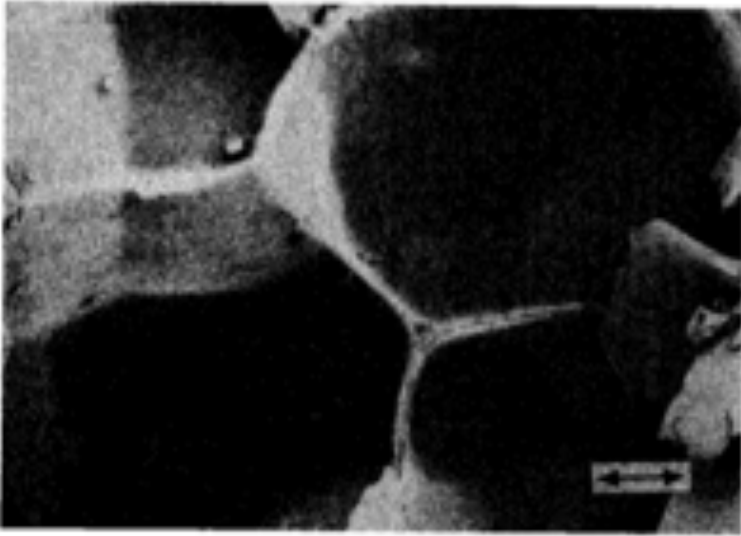


Figure 8 Scanning electron micrograph of transformed PMI 51 WF foam, processed at 170°C and 552 kPa for 8 hours (Magnification 128X). Length of scale mark is 3 mm

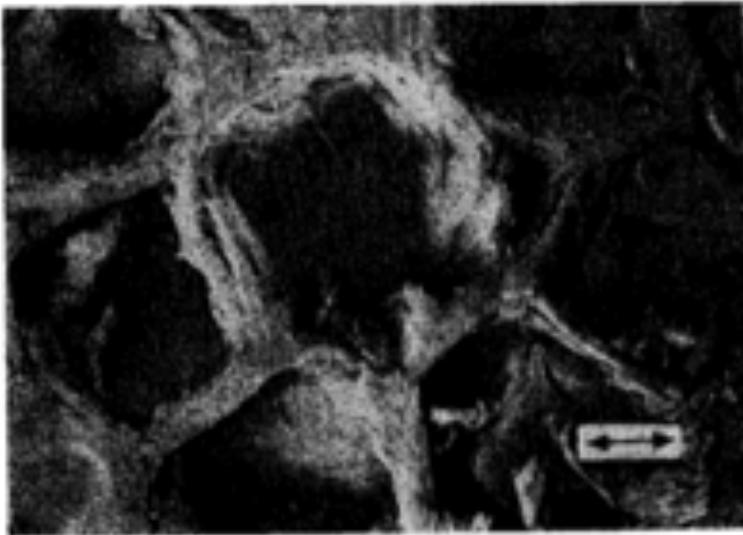


Figure 9 Scanning electron micrograph of transformed PMI 51 WF foam, processed at 220°C and 552 kPa for 8 hours (Magnification 128X). Length of scale mark is 3 mm

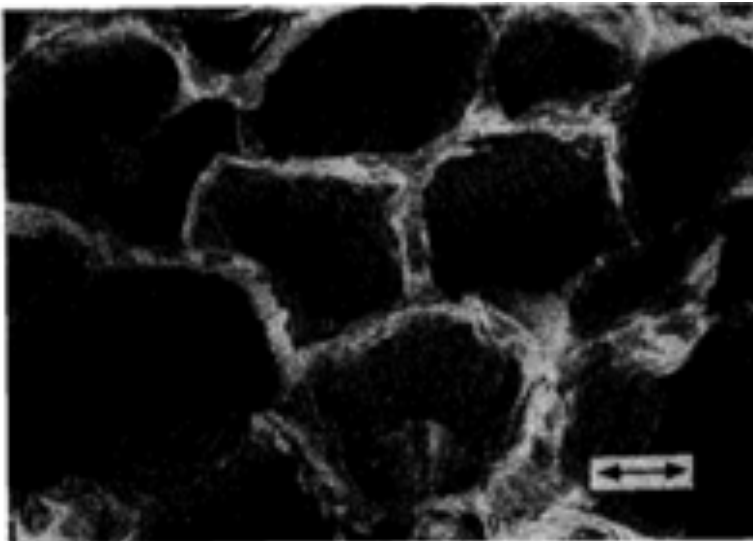
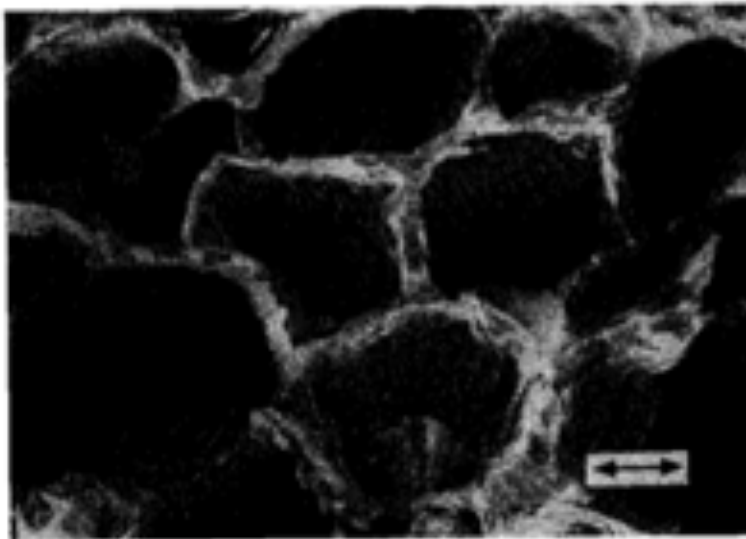


Figure 10 Scanning electron micrograph of original PMI 300 WF foam (Magnification 128X). Length of scale mark is 3 mm

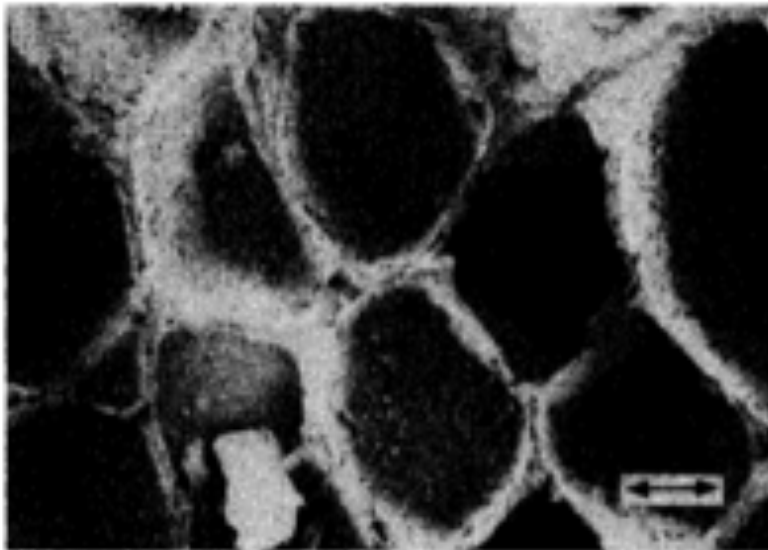


Figure 11 A low magnification photograph of the cell structure of an untransformed LDPE HS 45 sample is shown; a scale is provided on the photograph



Figure 12 A low magnification photograph of the cell structure of a transformed LDPE HS 45 (vacuum pressure) sample is shown; a scale is provided on the photograph

Figure 13 A low magnification photograph of the cell structure of a transformed LDPE HS 45 (hydrostatic compressive pressure) sample is shown; a scale is provided on the photograph

